

Customer :

customer

Customer part :

customer part

Comment :

Comment

S1=5.66

S2=6.89

Tmax=462

Tp S2=501.0

PI=0.45

HI=110

Sample =1693.10

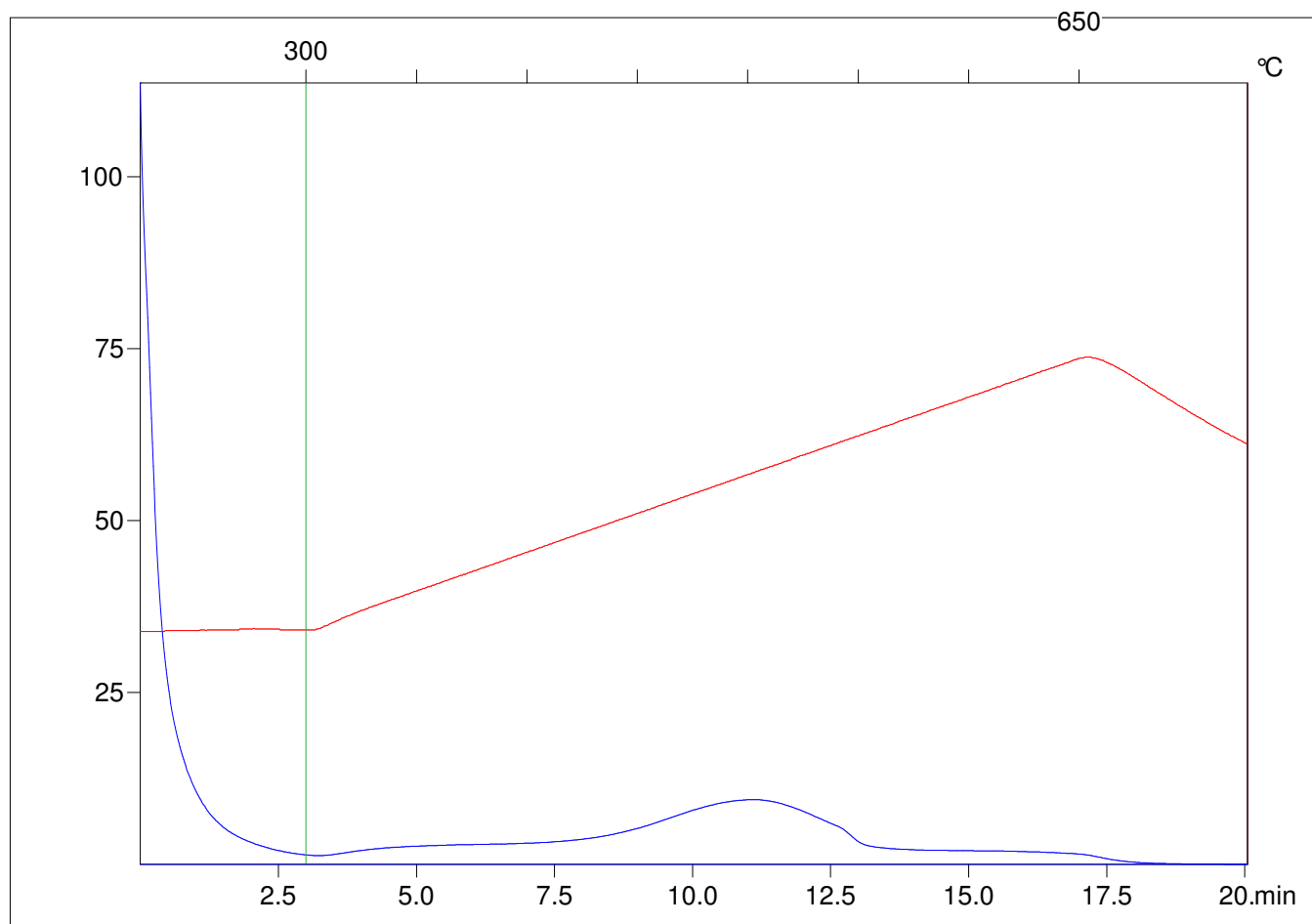
Method =Bulk Rock

Cycle=Basic

KFID(10*9)=1444

Qty =70.6

TOC=6.29



C:\VINC\PK1_1792\PK064.R00 : FID pyrolysis graphic

State

Pyro Status

Oxi Status